



PC STA100+00.00

JOHN MCCORMACK DR NE

PT STA101+33.46

PC STA101+30.29

PT STA102+43.86

PC STA102+40.71

PT STA103+50.29

PC STA103+47.14

PT STA104+33.46

PC STA104+30.29

PT STA105+43.86

PC STA105+40.71

PT STA106+50.29

PC STA106+47.14

PT STA107+33.46

PC STA107+30.29

PT STA108+43.86

PC STA108+40.71

PT STA109+50.29

PC STA109+47.14

PT STA110+33.46

PC STA110+30.29

PT STA111+43.86

PC STA111+40.71

PT STA112+50.29

PC STA112+47.14

PT STA113+33.46

PC STA113+30.29

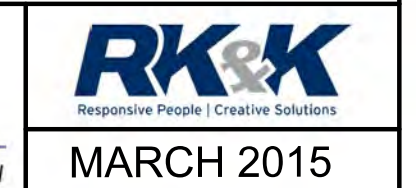
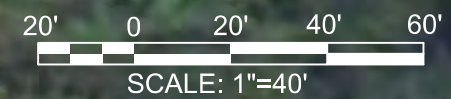
PT STA114+43.86

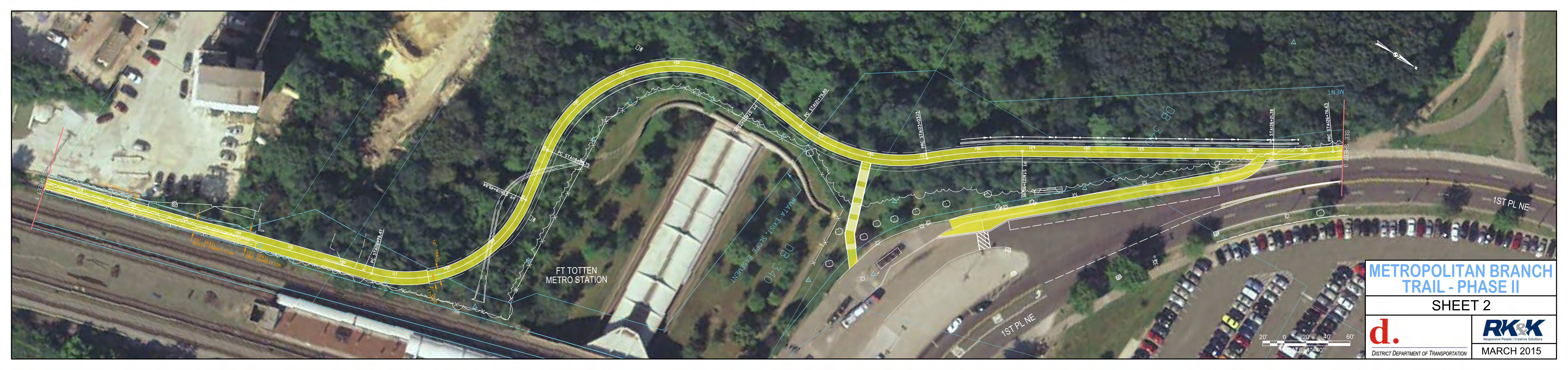
PC STA114+40.71

SEE SHEET 2

METROPOLITAN BRANCH TRAIL - PHASE II

SHEET 1





METROPOLITAN BRANCH TRAIL - PHASE II

SHEET 2

 <p>d. DISTRICT DEPARTMENT OF TRANSPORTATION</p>	 <p>RK&K Responsive People Creative Solutions MARCH 2015</p>
--	--

FT TOTTEN METRO STATION

1ST PL NE

1ST PL NE





METROPOLITAN BRANCH TRAIL - PHASE II

SHEET 3

d.
DISTRICT DEPARTMENT OF TRANSPORTATION

RK&K
Responsive People | Creative Solutions

MARCH 2015



METROPOLITAN BRANCH TRAIL - PHASE II

SHEET 4

