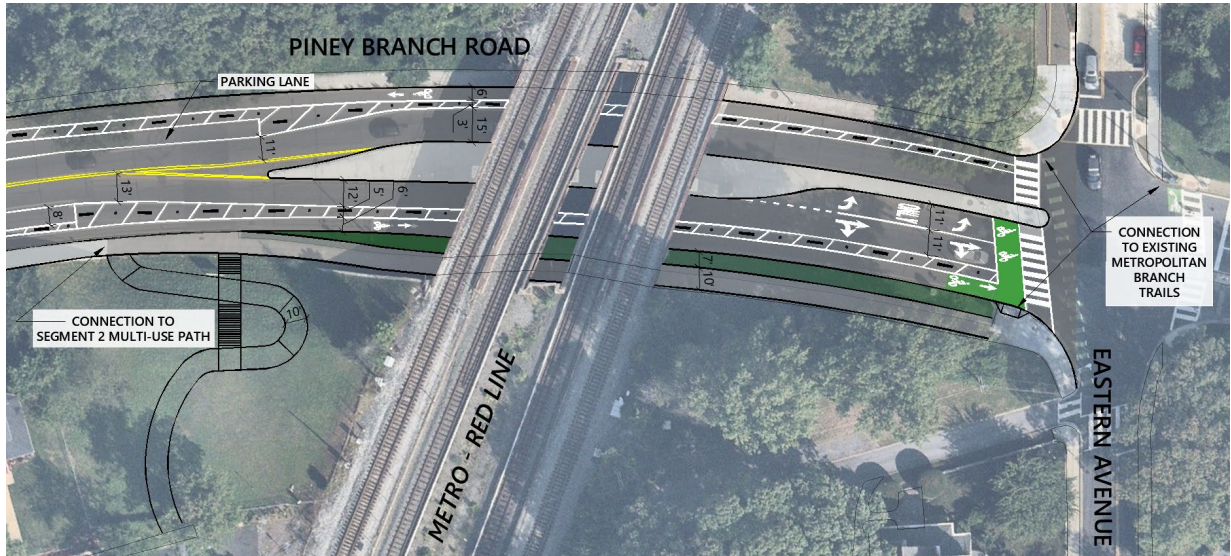


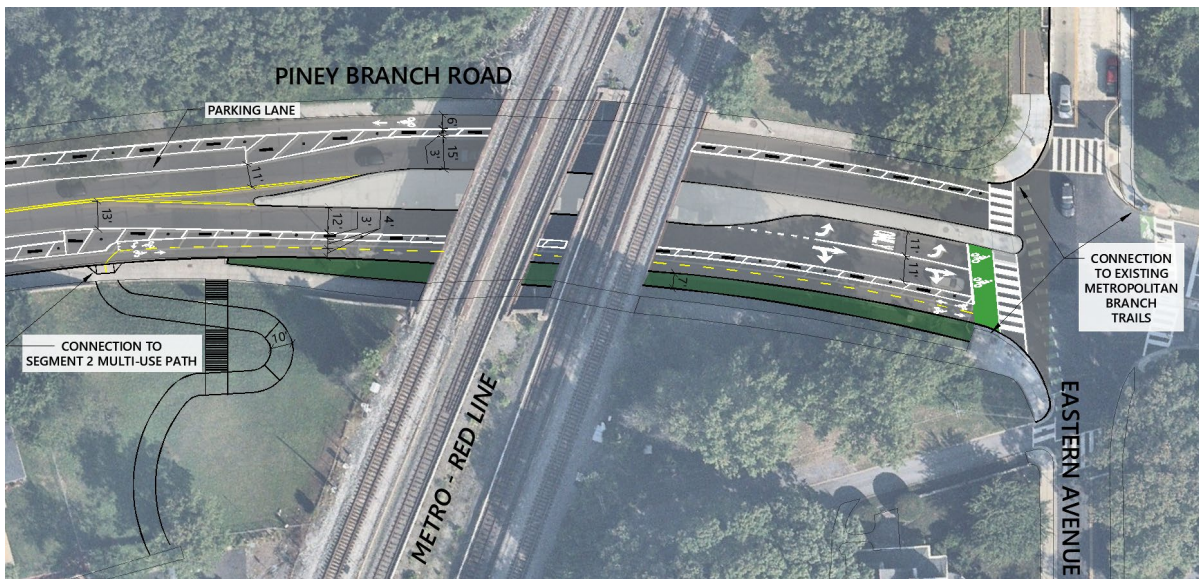
Appendix K. – All Design Alternatives

Segment 1 Piney Branch Road

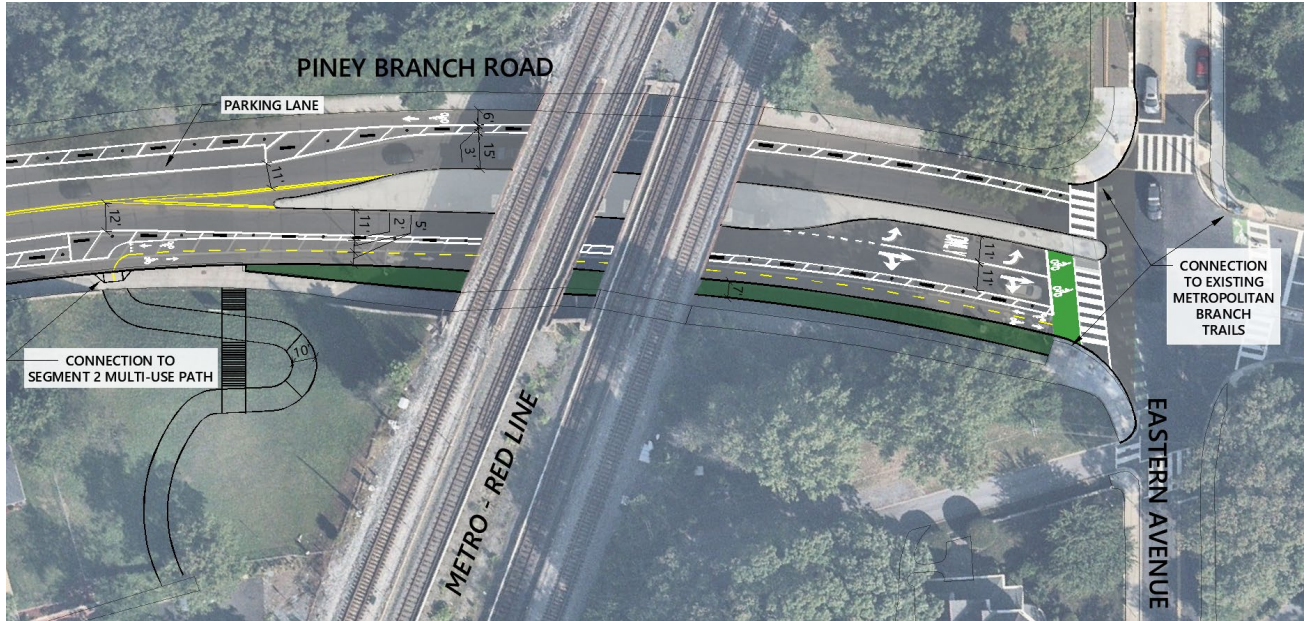
10-foot multi-use path on south side (1A)



Two-way 4-foot protected bike lanes on south side, 12-foot travel lanes (1B)

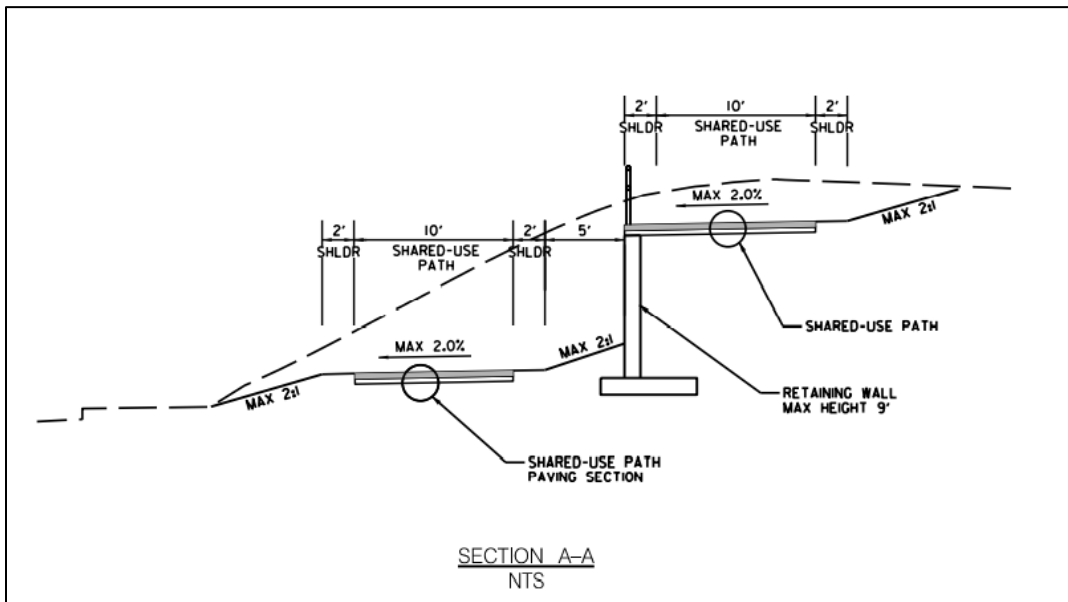
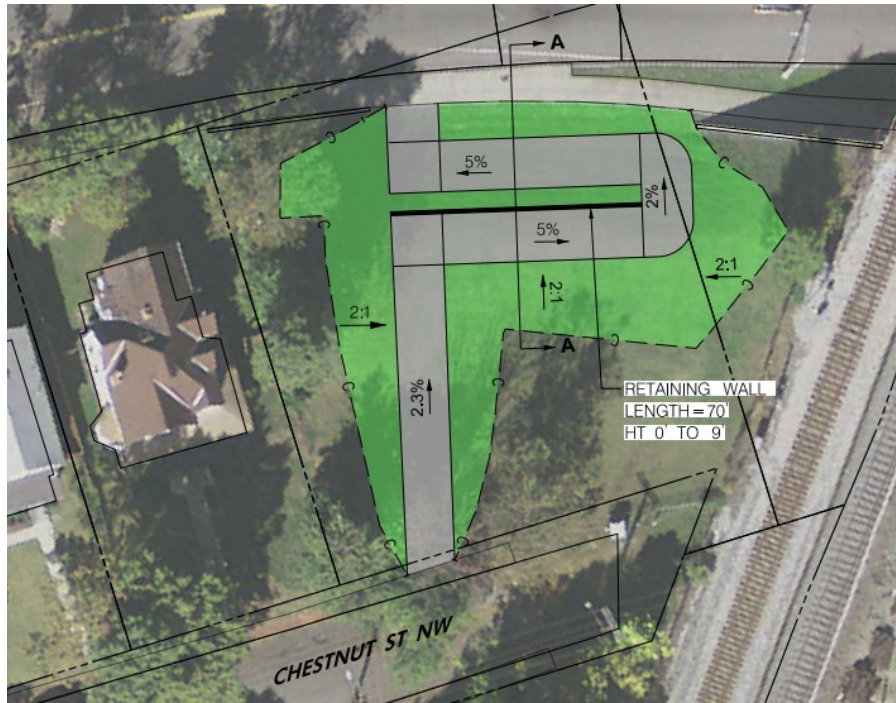


Two-way 5-foot protected bike lanes on south side, 11-foot travel lanes (1C)

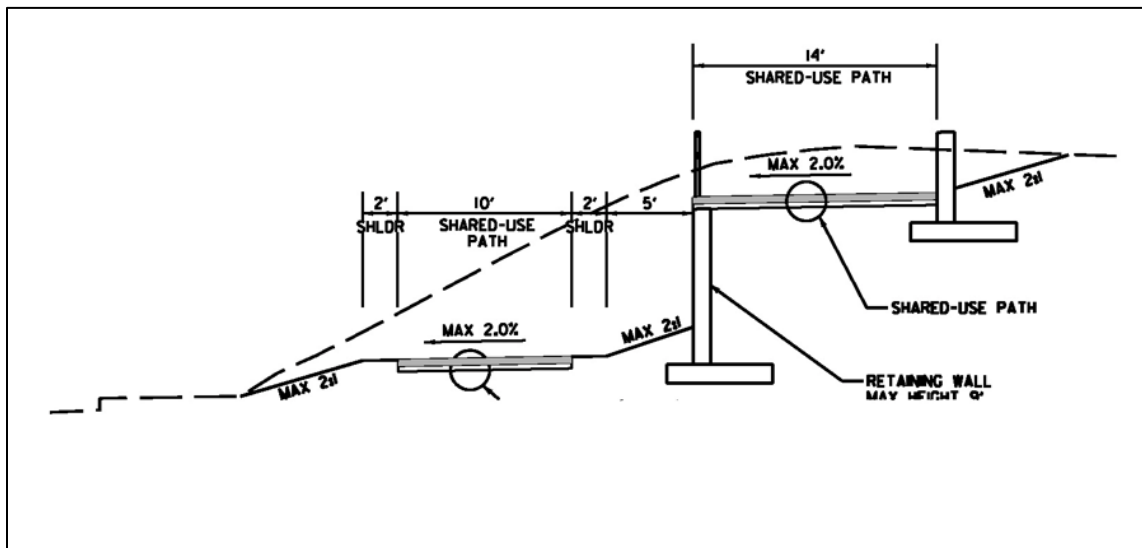
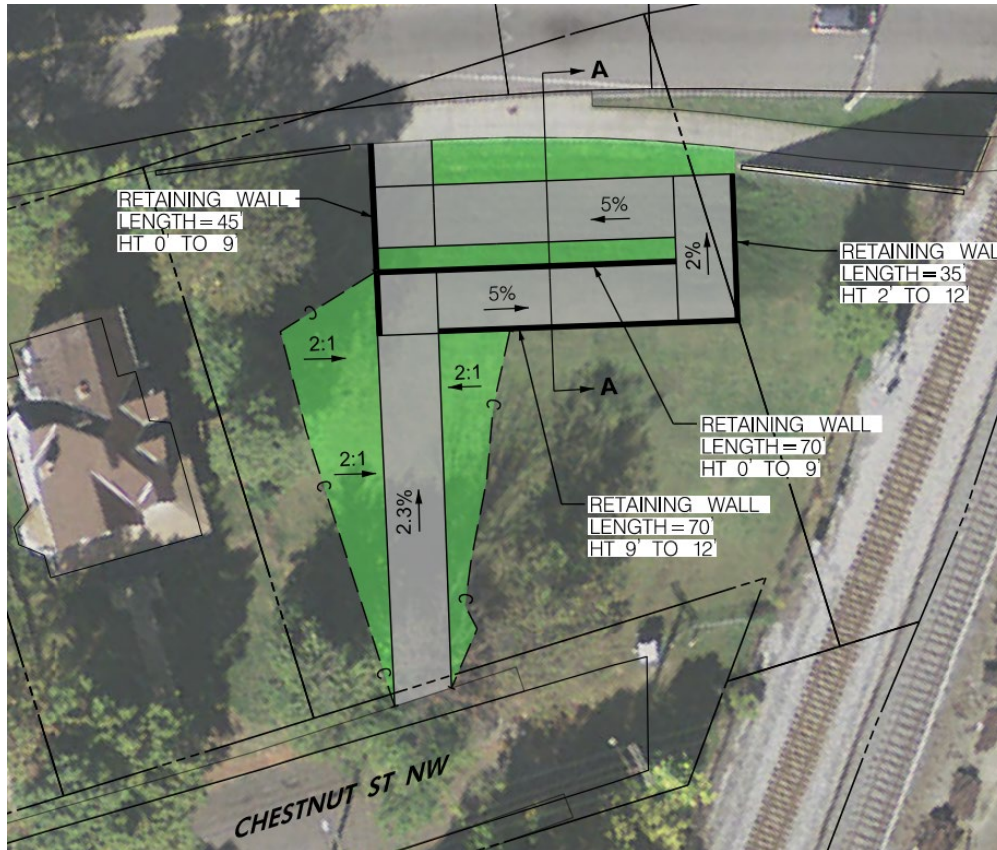


Segment 2 Piney Branch Road to Chestnut Street

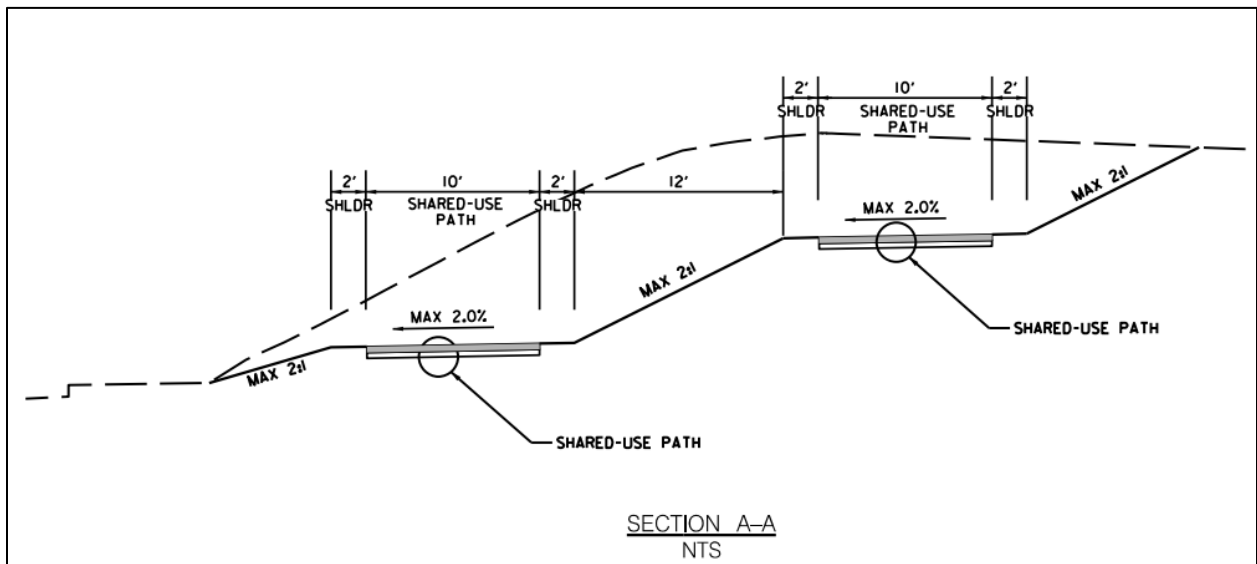
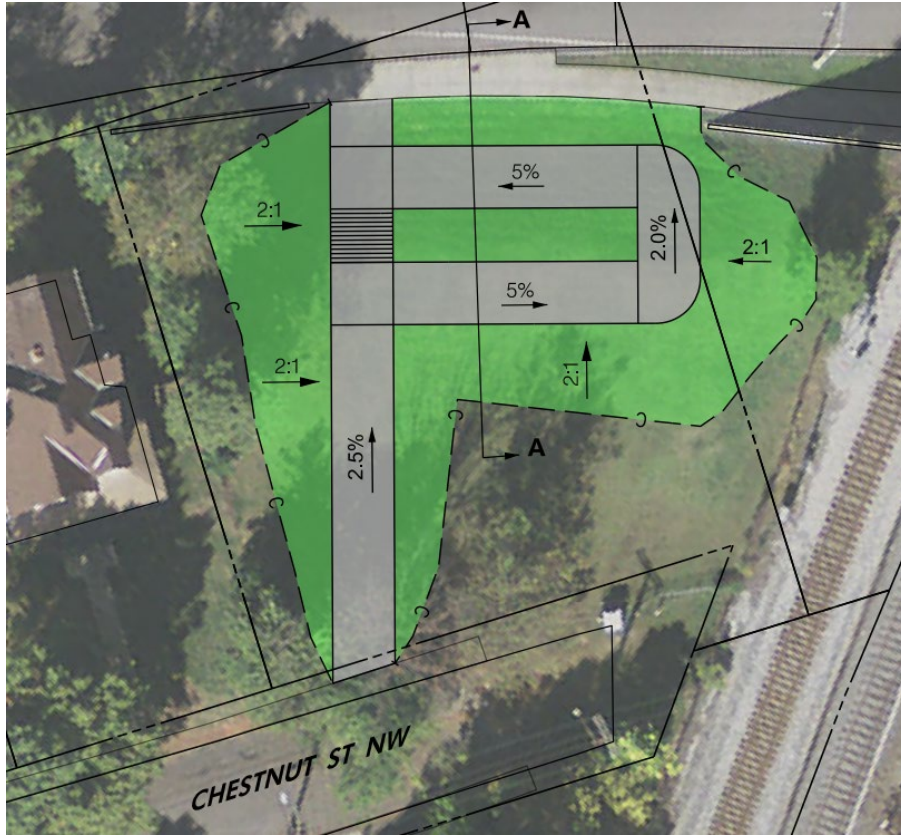
10-foot multi-use switchback ramp with retaining wall and 7,300 SF green space (5% slope, max.) (2C)



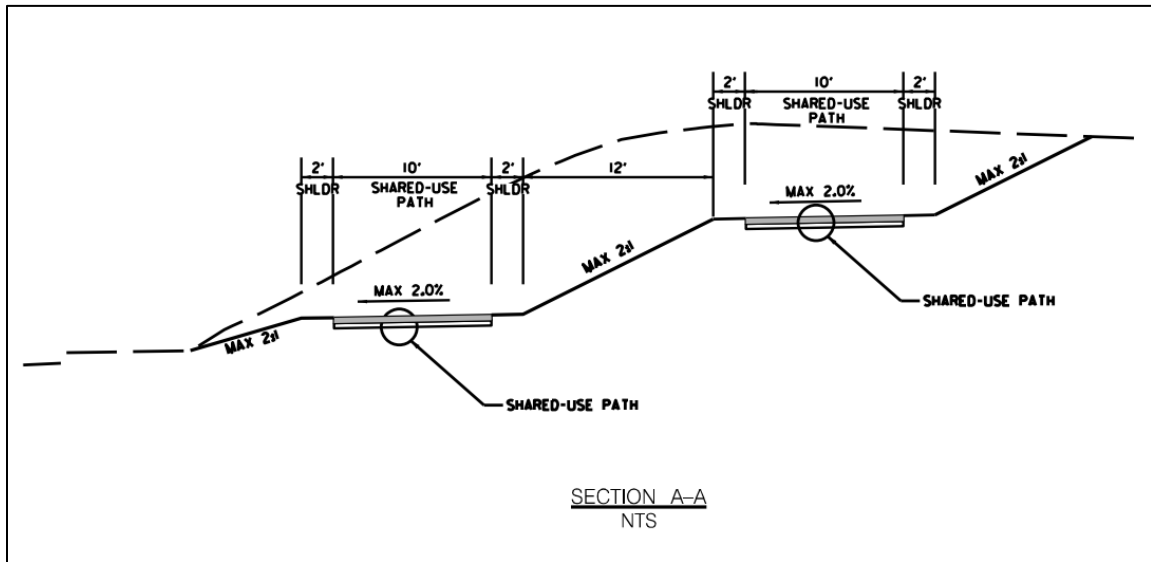
10-foot multi-use switchback ramp with retaining wall and 8,300 SF green space (5% slope, max.) (2D)



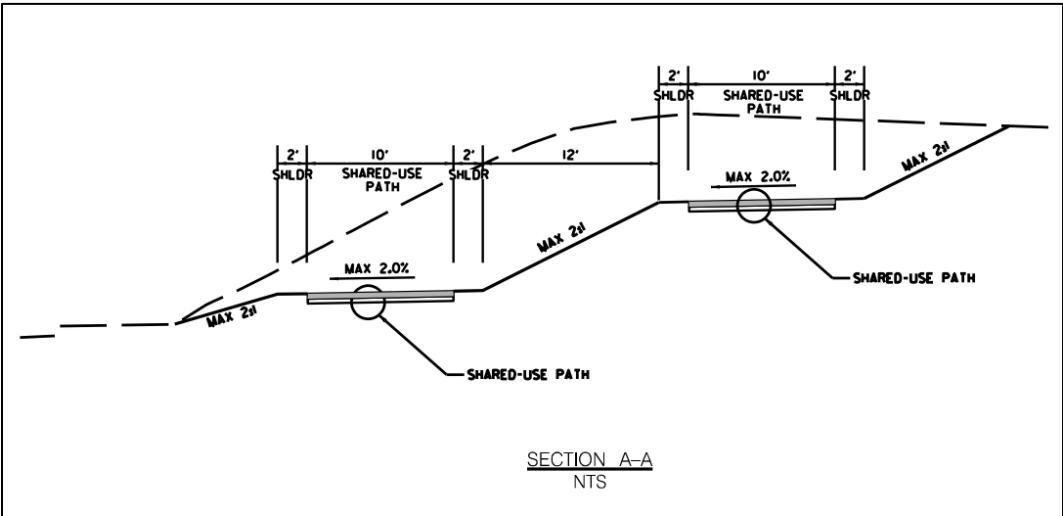
10-foot multi-use switchback ramp with staircase and 4,600 SF green space (5% slope, max.) (2E)



10-foot multi-use curvilinear path and 5,500 SF green space (5% slope, max.) (2F)



10-foot multi-use curvilinear path with staircase and 5,500 SF green space (5% slope, max.) (2G)



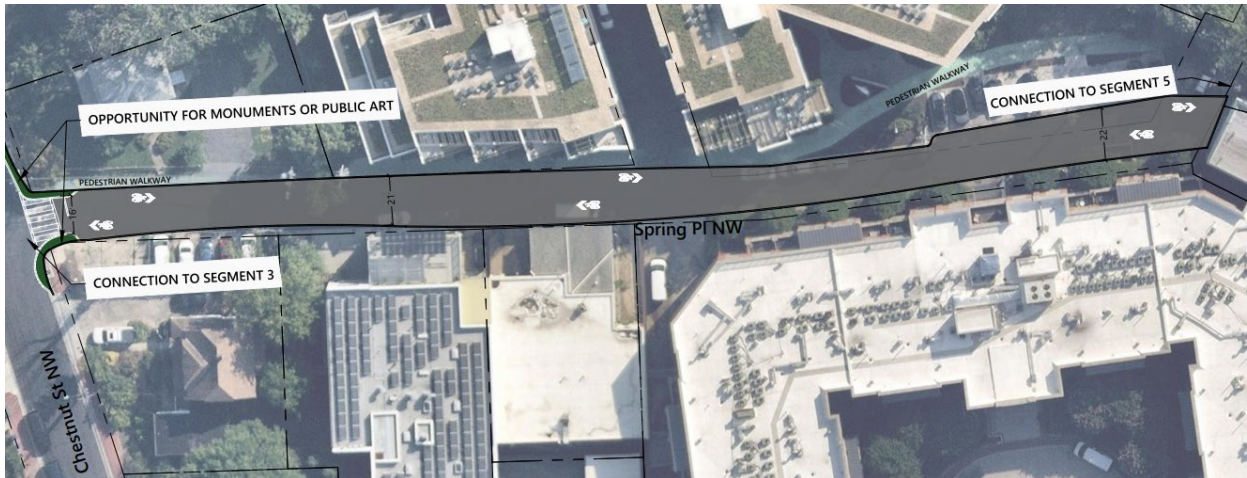
Segment 3: Chestnut Street

Neighborhood bikeway (3A)



Segment 4: Spring Place

Neighborhood bikeway treatment with gateway (4A)

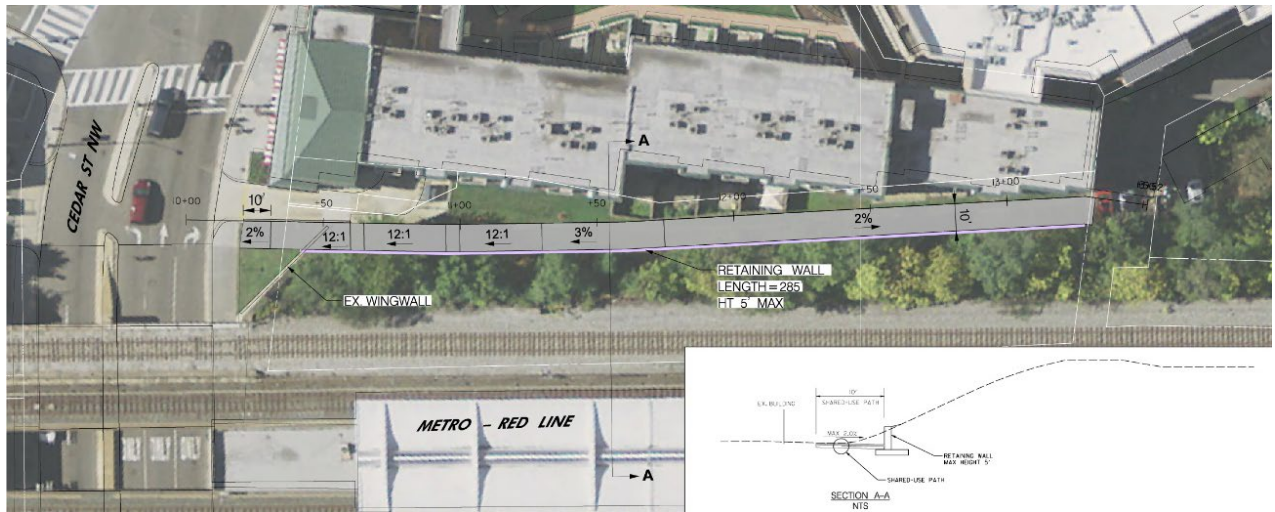


Woonerf with chokers (4B)

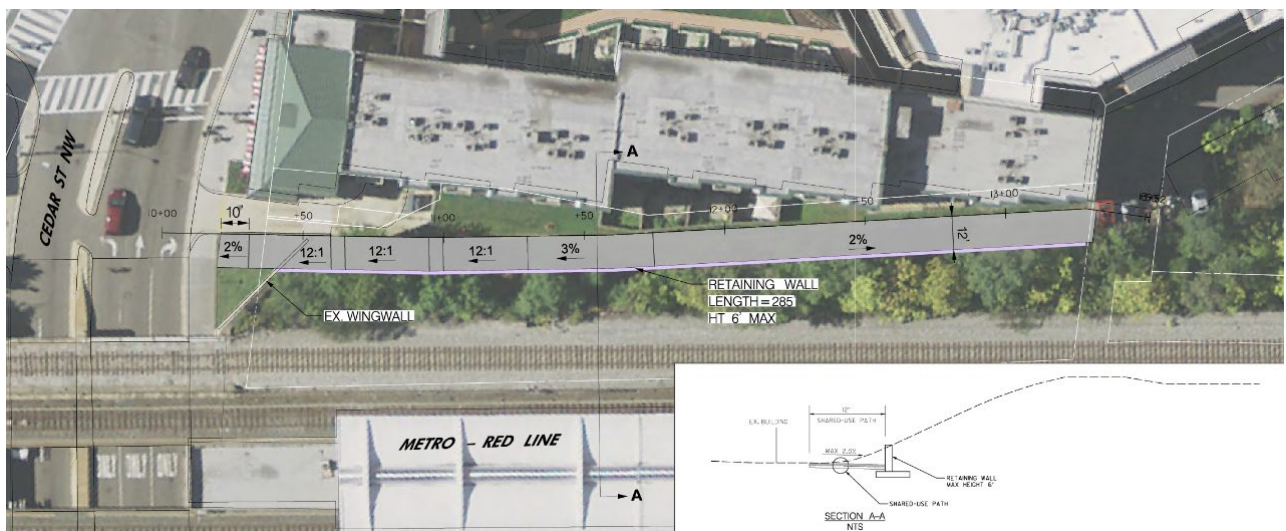


Segment 5: 343 Cedar Street

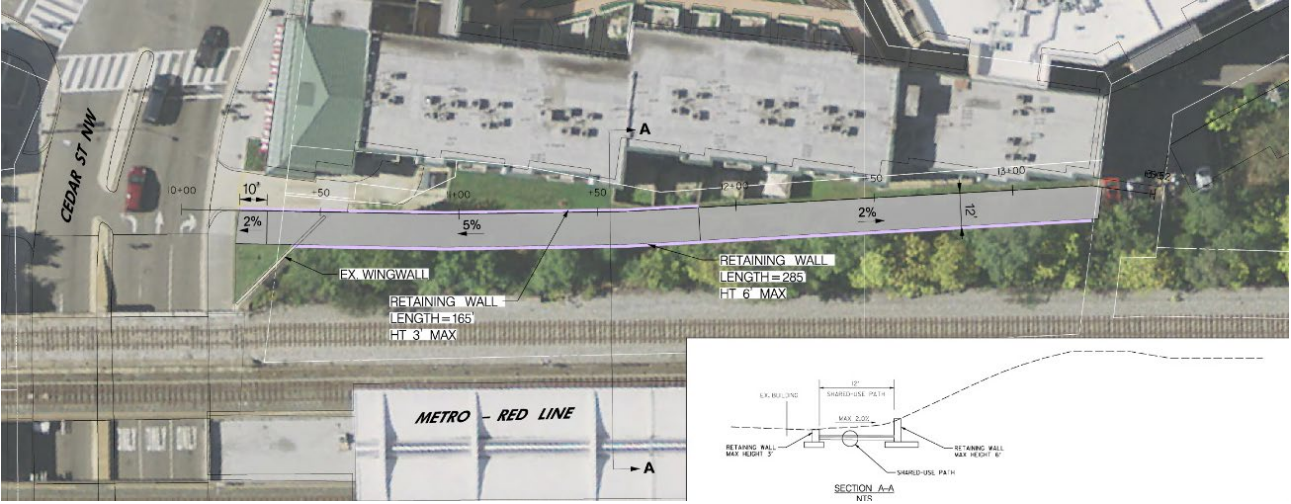
10-foot multi-use path with 5-foot retaining wall (8.3% slope, max.) (5A)



12-foot multi-use path with 6-foot retaining wall (8.3% slope, max.) (5B)



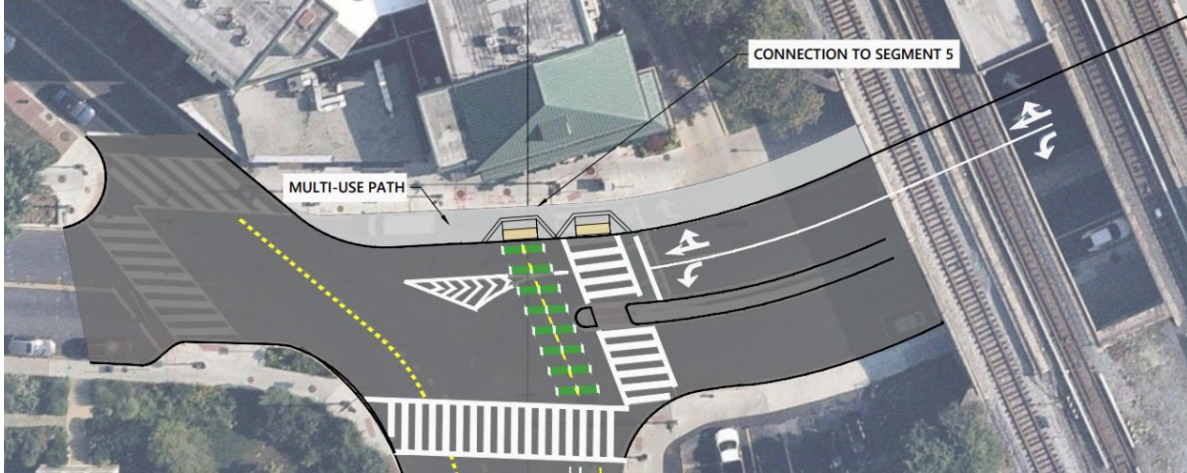
12-foot multi-use path with 6-foot retaining wall along CSX embankment and 3-foot retaining wall along 343 Cedar Street property (5% slope, max.) (5C)



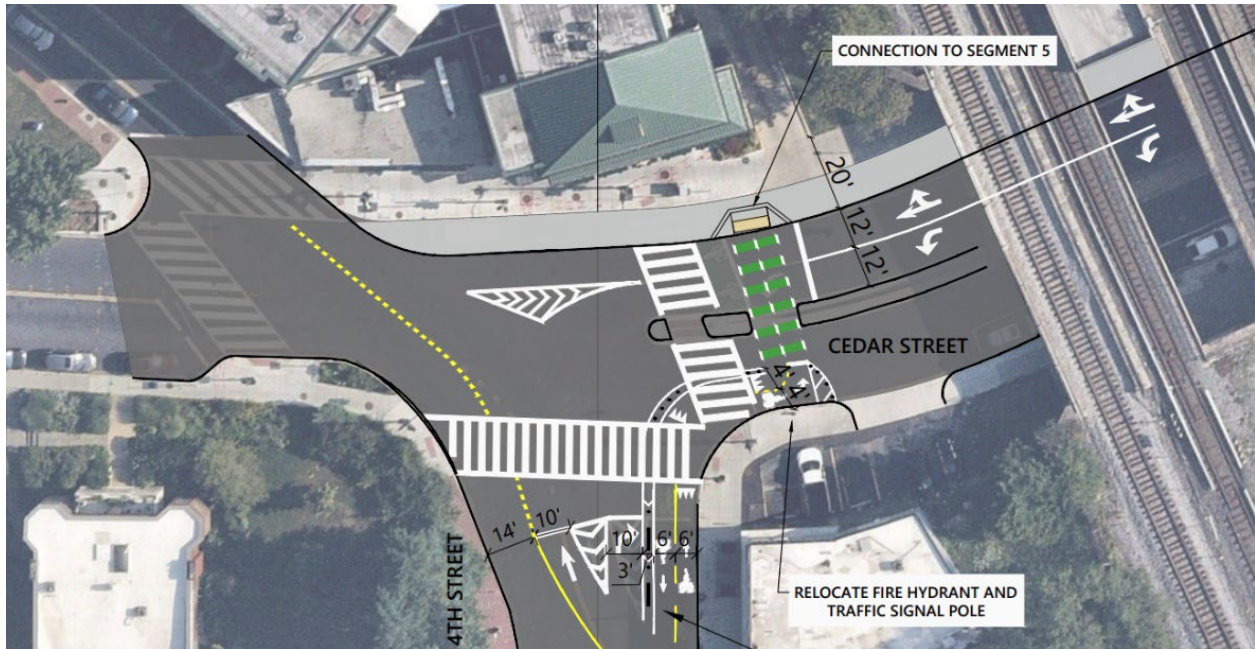
Segment 6: Cedar Street, Blair Road, 4th Street, 3rd Street, Butternut Street, Aspen Street, Whittier Street, & Van Buren Street

Blair Road / Cedar Street Intersection

20-ft multi-use path, two-way crossing on the east side (6B.1)



20-ft multi-use path, two-way crossing on the west side (6C.1)



4th Street from Cedar Street and Blair Road intersection to Butternut Street

5-ft two-way protected bike lanes on the east side (6A.2)

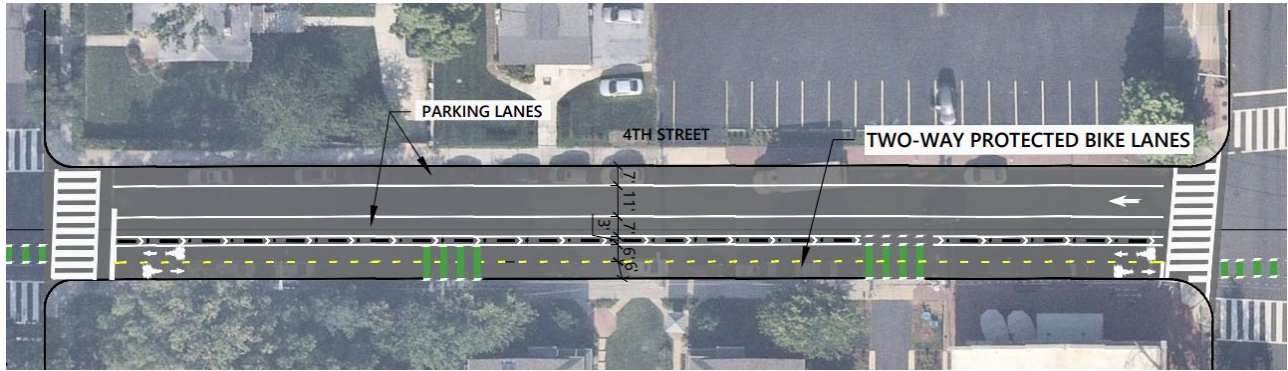


4th Street from Butternut Street to Aspen Street

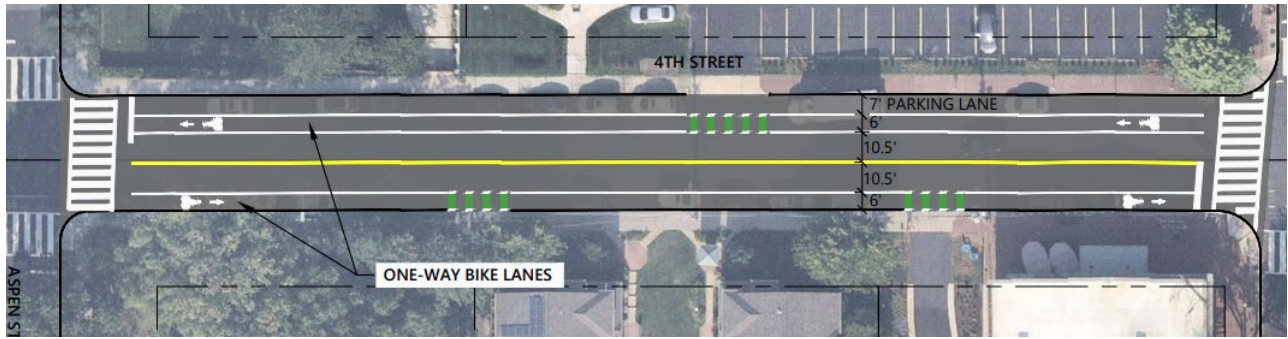
Neighborhood bikeway (6A.3)



6-ft two-way protected bike lanes on the east side (6B.3)



6-ft one-way bike lanes on east and west sides (6C.3)

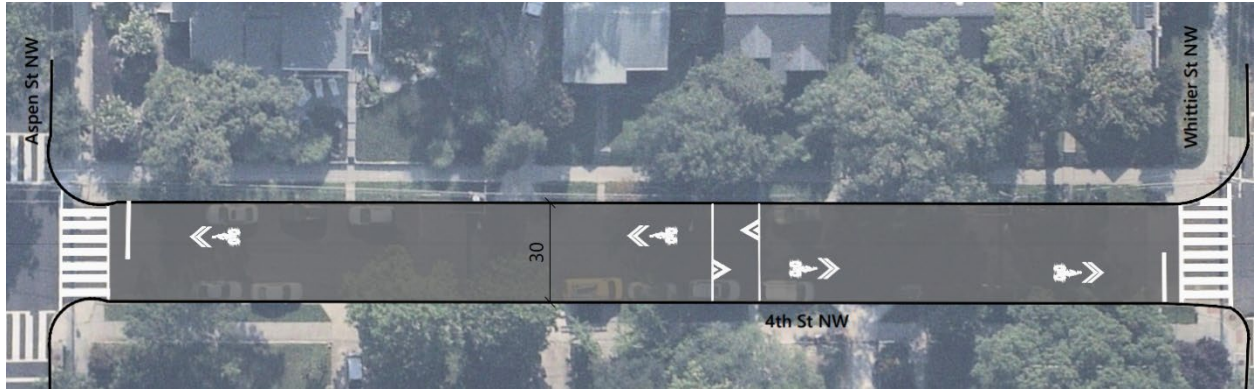


4th Street from Aspen Street to Van Buren Street

5-ft advisory bike lanes on east and west sides (6A.4)

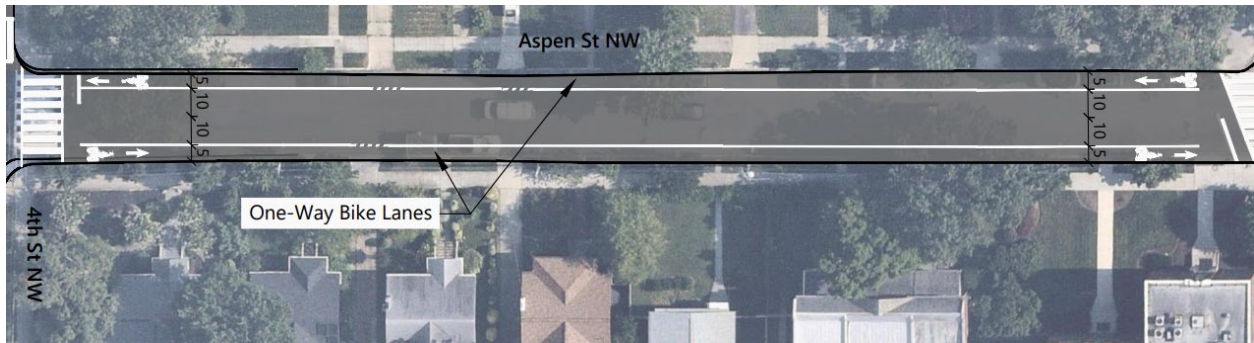


Neighborhood bikeway (6B.4)

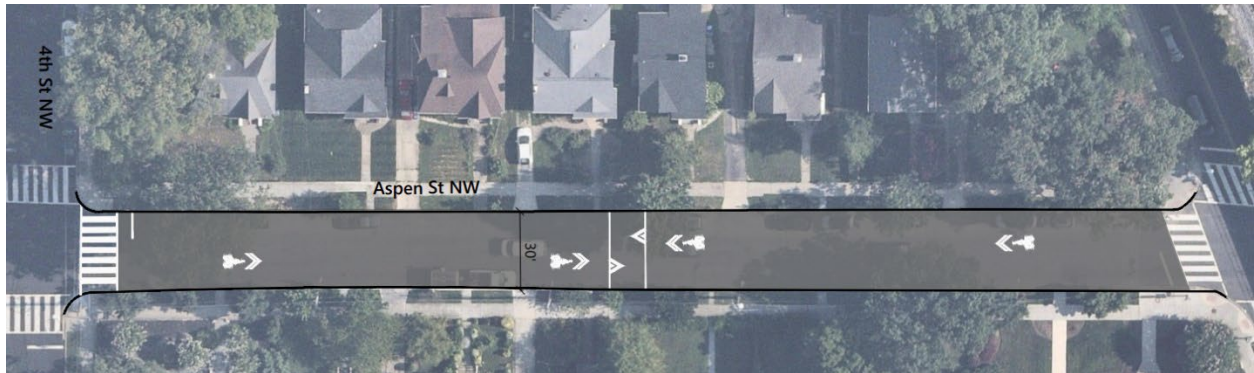


Aspen Street from 4th Street to Blair Road

5-ft one-way bike lanes (6A.6)

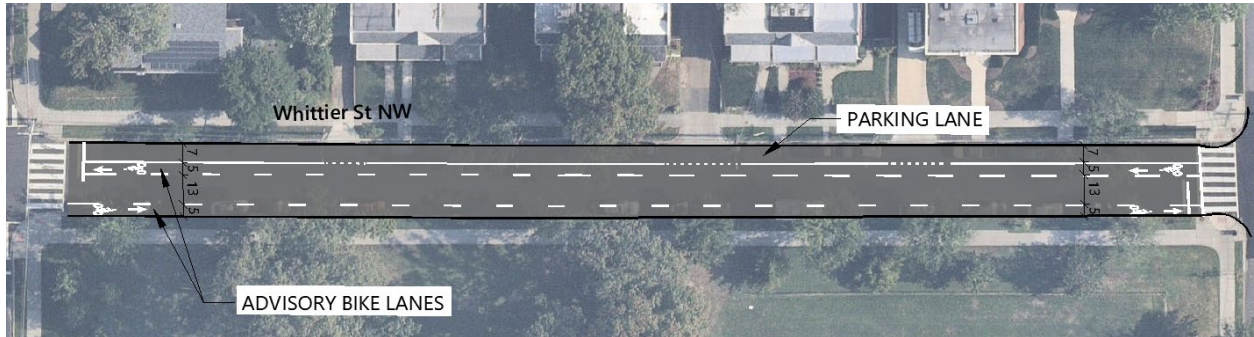


Neighborhood bikeway (6B.6)



Whittier Street from 4th Street to Blair Road

5-ft advisory bike lanes on east and west sides (6A.7)



Neighborhood Bikeway (6B.7)



Van Buren Street – 4th Street to Blair Road

5-ft advisory bike lanes on east and west sides (6A.8)



Neighborhood bikeway (6B.8)

