

DISTRICT DEPARTMENT OF TRANSPORTATION

Metropolitan Branch Trail:

Fort Totten to Takoma Section

Blair Road to Piney Branch Road Section

November 11, 2022

Presenters:

Samer Alhawamdeh

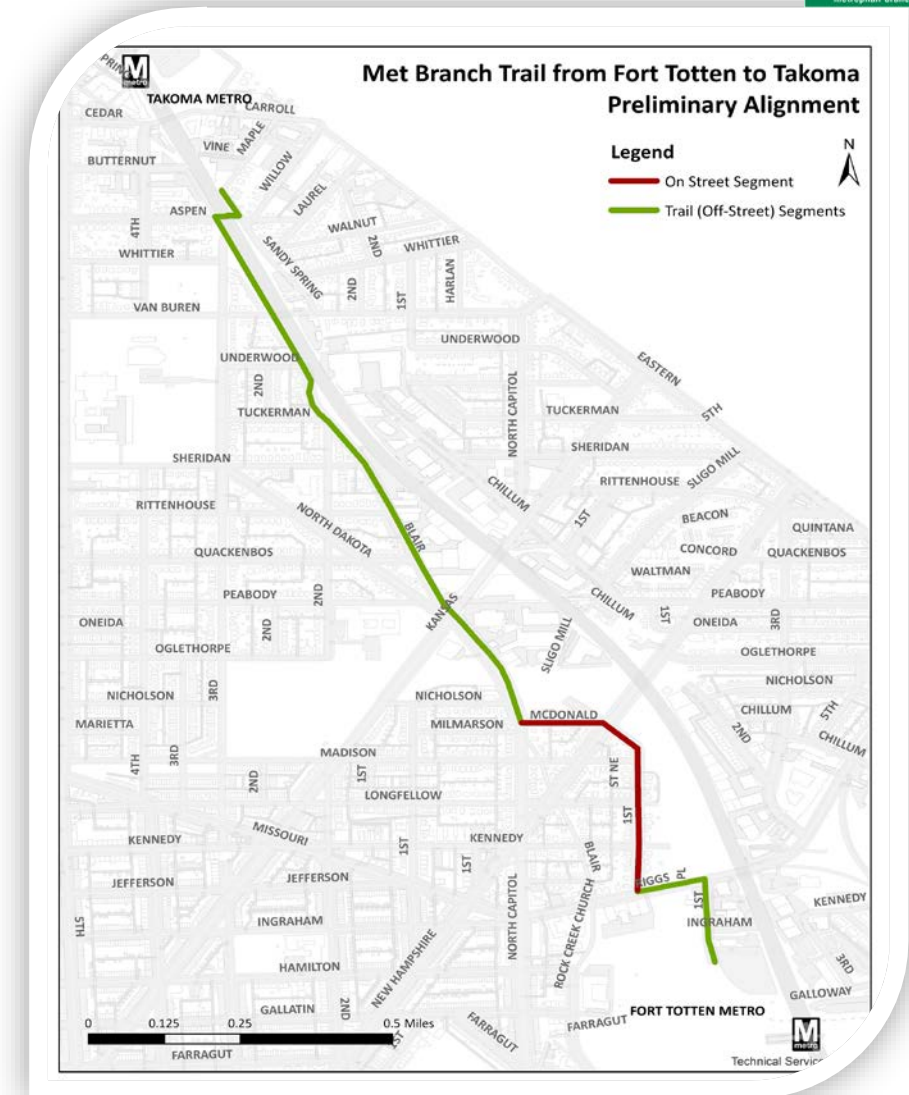
Michael Alvino

MBT: Fort Totten to Takoma section

This section of the MBT focuses between the Fort Totten and the Takoma neighborhood.

Project latest update:

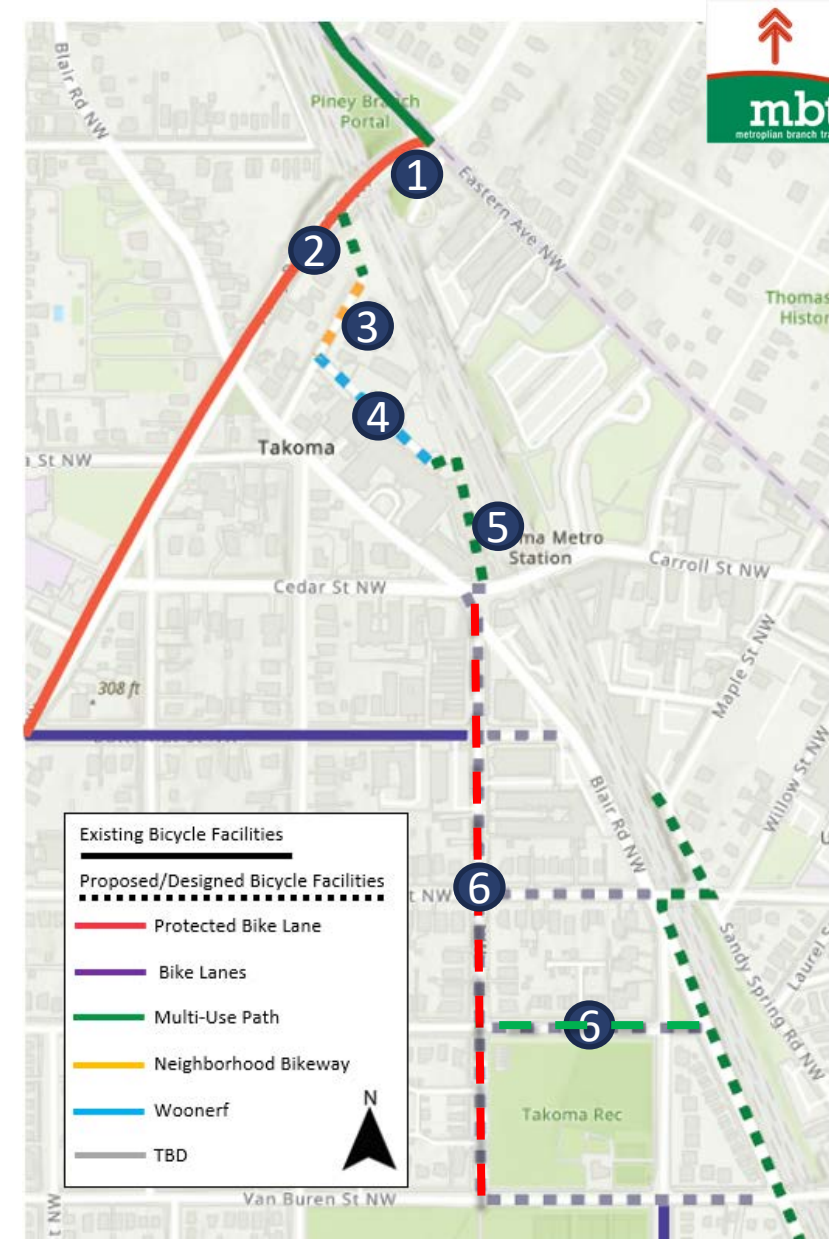
- Design Phase
 - The Final 100% design (PSE) completed: September 2022
- Procurement Phase
 - Bid Document completed: November 2022
 - Advertisement Starts: Anticipated Early December
 - Bid opening: Early January
- Construction Phase
 - Public Pre-construction meet: Anticipated February 2023
 - Notice to Proceed (NTP): Anticipated March 2023



MBT: Blair Road to Piney Branch Road Section

Trail Sub-Segments:

- Segment 1: Piney Branch Road
- Segment 2: Piney Branch Road to Chestnut Street
- Segment 3: Chestnut Street
- Segment 4: Spring Place
- Segment 5: 343 Cedar Street
- Segment 6: 4th Street, Whittier Street



Process & Schedule for Design Phase



Previous Engagement & Analysis

Public Meeting on June 7, 2022

- Presented design recommended alternative for each segment
- Presented the Project Schedule
- Responded to Q&A Session
- <https://metbranchtrail.com/blair-rd-to-piney-branch/>

Preliminary Engineering Report

- Analyzed design alternatives for each segment
- Considered measures of effectiveness, such as
 - User ease, comfort, and safety
 - Effects to traffic and parking
 - Feasibility and cost

Public Meeting on December 7, 2021

- Presented design alternatives for each segment
- Gathered segment-by-segment feedback in breakout sessions
- Facilitated online survey (281 responses)

RECOMMENDED ALIGNMENTS

Segment 1: Piney Branch Road

Recommended Alignment:
8-foot two-way protected bike lane on the south side

Existing Conditions:

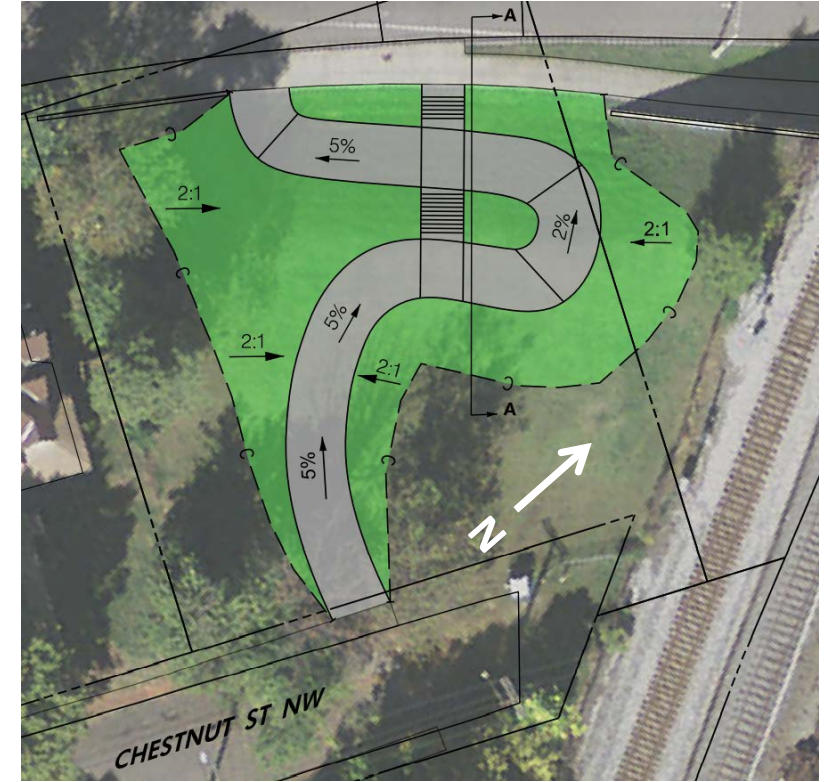


Segment 2: Piney Branch Road to Chestnut Street

Existing Conditions:



Recommended Alignment: 10-foot multi-use curvilinear path with staircase (5% slope) max

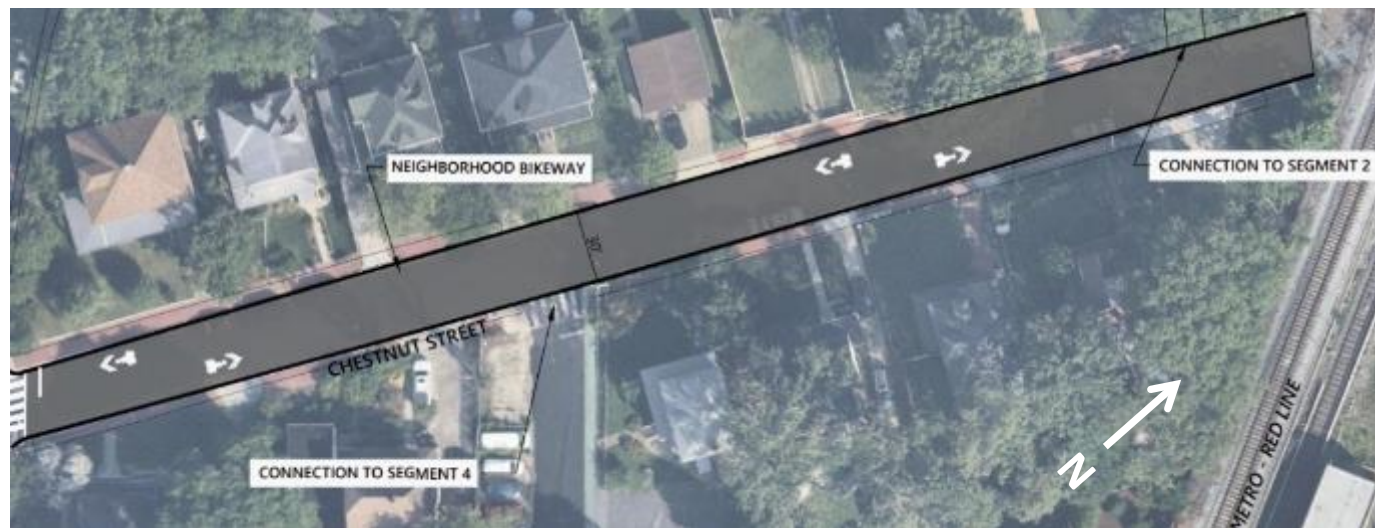


Segment 3: Chestnut Street

Existing Conditions:



Recommended Alignment: Neighborhood bikeway

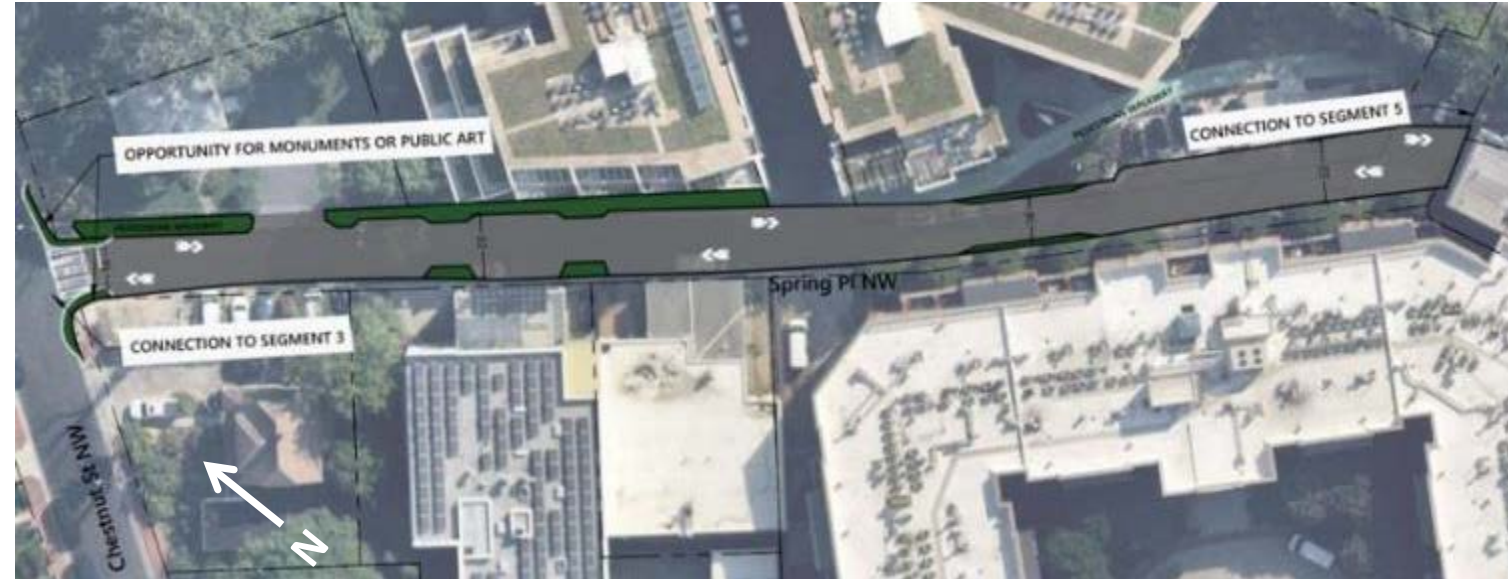


Segment 4: Spring Place

Existing Conditions:



Recommended Alignment: Woonerf with chokers



Segment 5: 343 Cedar Street

Recommended Alignment:

9' – 12' multi-use path, 5% slope max, retaining walls on both sides

Existing Conditions:



Segment 6: Cedar Street, 4th Street

Recommended Alignment:
Cedar Street – multi-use path on north side, two-way crossing

Existing Conditions:



Segment 6: 4th Street (Cedar to Butternut)

Recommended Alignment:

Two-way protected bike lane on the east side of 4th Street from Cedar Street to Butternut Street

Existing Conditions:



Segment 6: 4th Street (Butternut to Aspen)

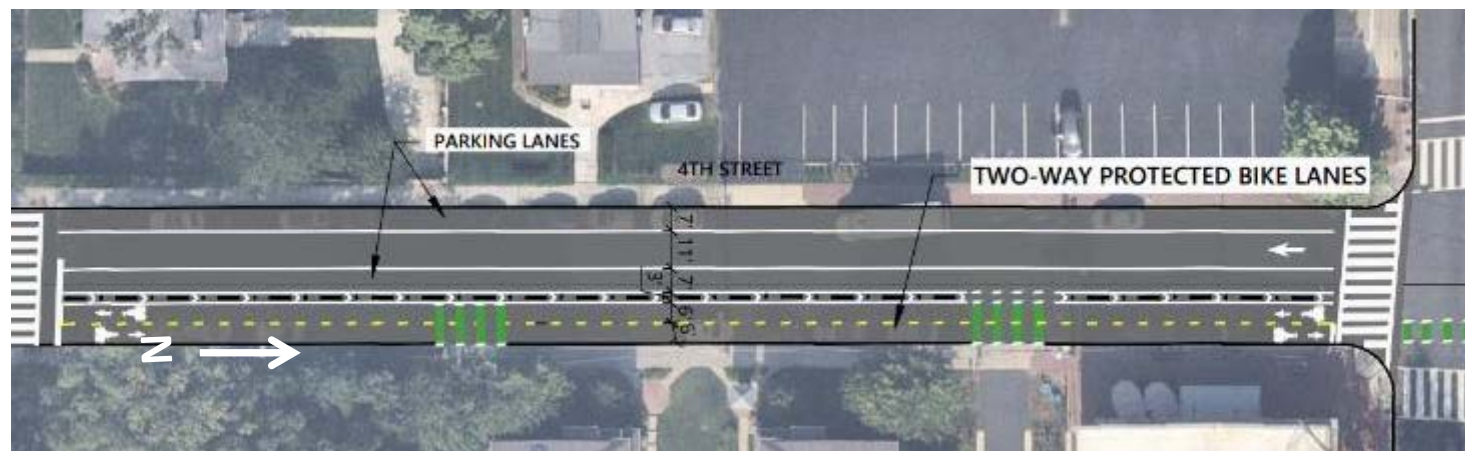
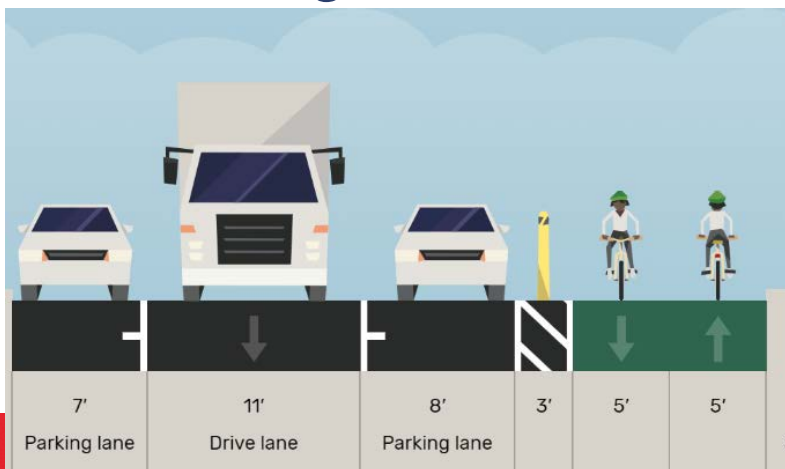
Existing Conditions:



Recommended Alignment:

One-way travel lane southbound
Two-way protected bike lane on the east side of 4th Street from Butternut St to Aspen St

Recommended Alignment:



Segment 6: 4th Street (Aspen to Van Buren)

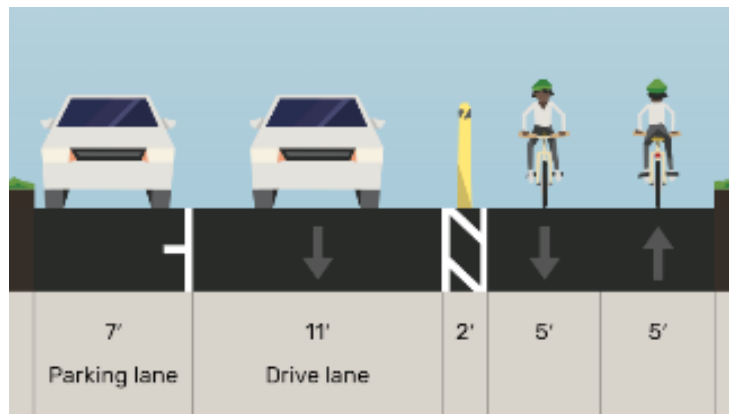
Existing Conditions:



Recommended Alignment:

One-Way Travel Lane Southbound
Two-way protected bike lane on the east side of 4th Street from Aspen Street to Van Buren Street

Recommended Alignment:



Segment 6: Whittier Street (4th St to 3rd St)

Recommended Alignment:
Neighborhood bikeway and 10-ft multi-use path on south side

Existing Conditions:



Blair Road to Piney Branch Road Design

- Provide us with feedback, ask questions, or contact us no later than December 19, 2022 at: **metbranchtrail@dc.gov**
- Project updates and materials are available at:
<https://www.metbranchtrail.com/blair-rd-to-piney-branch/>
- Next Steps:
 - Continue environmental review, complete intermediate (65%) design
 - Complete final (100%) design

d.

District Department of Transportation