

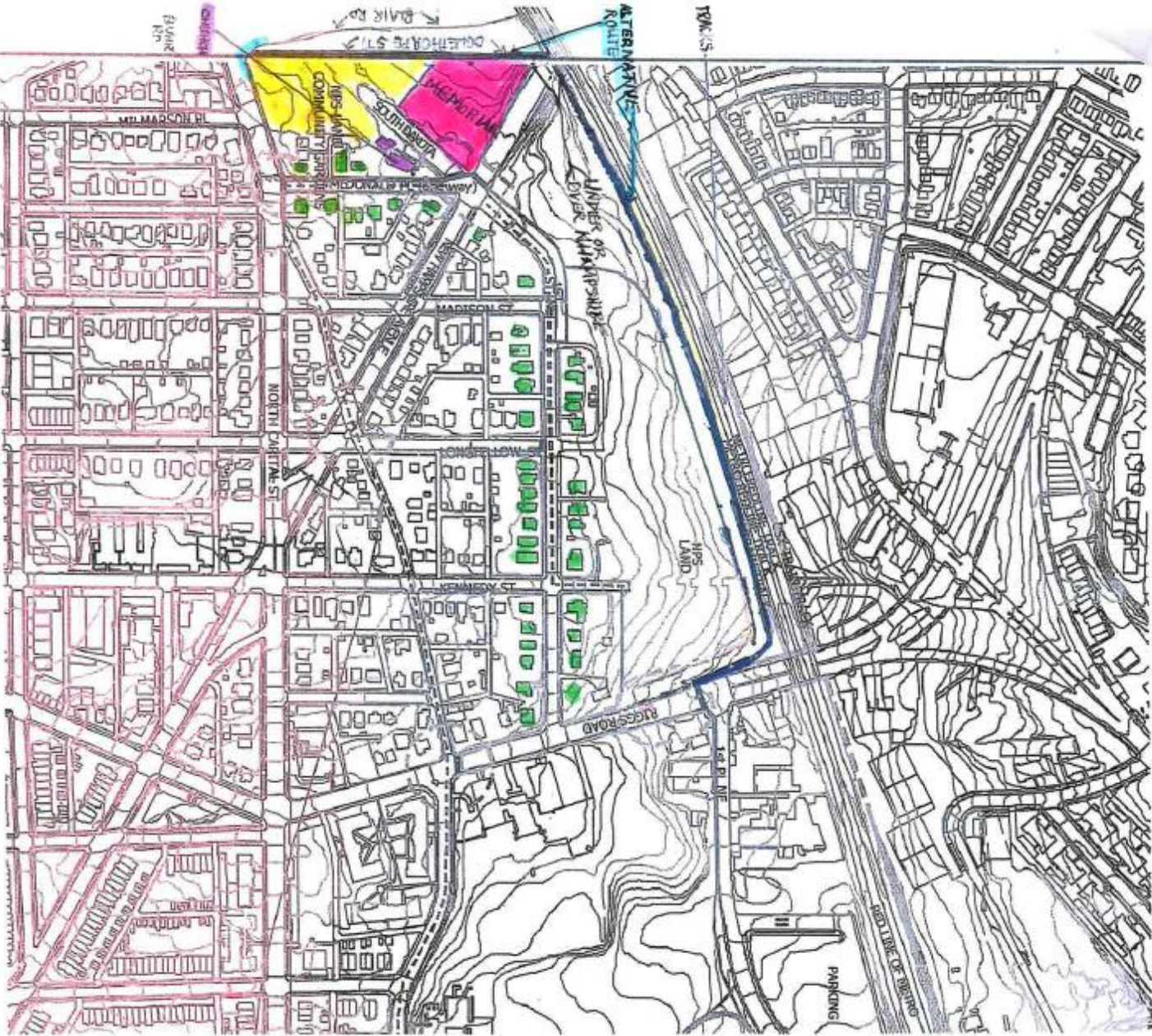


MAP 3: ALTERNATIVES A1 THROUGH A4 –SOUTH TO NORTH ALIGNMENTS



Environmental Assessment (2010)

**"GREATER ST. PAUL TO RIGGS ROAD/FT. TOTTEN NE VICINITY ALTERNATIVE ROUTE"  
 (TO & FROM BLAIR, OGLETHORPE, METRO-TRAIN TRACKS, RIGGS ROAD/FT. TOTTEN)**

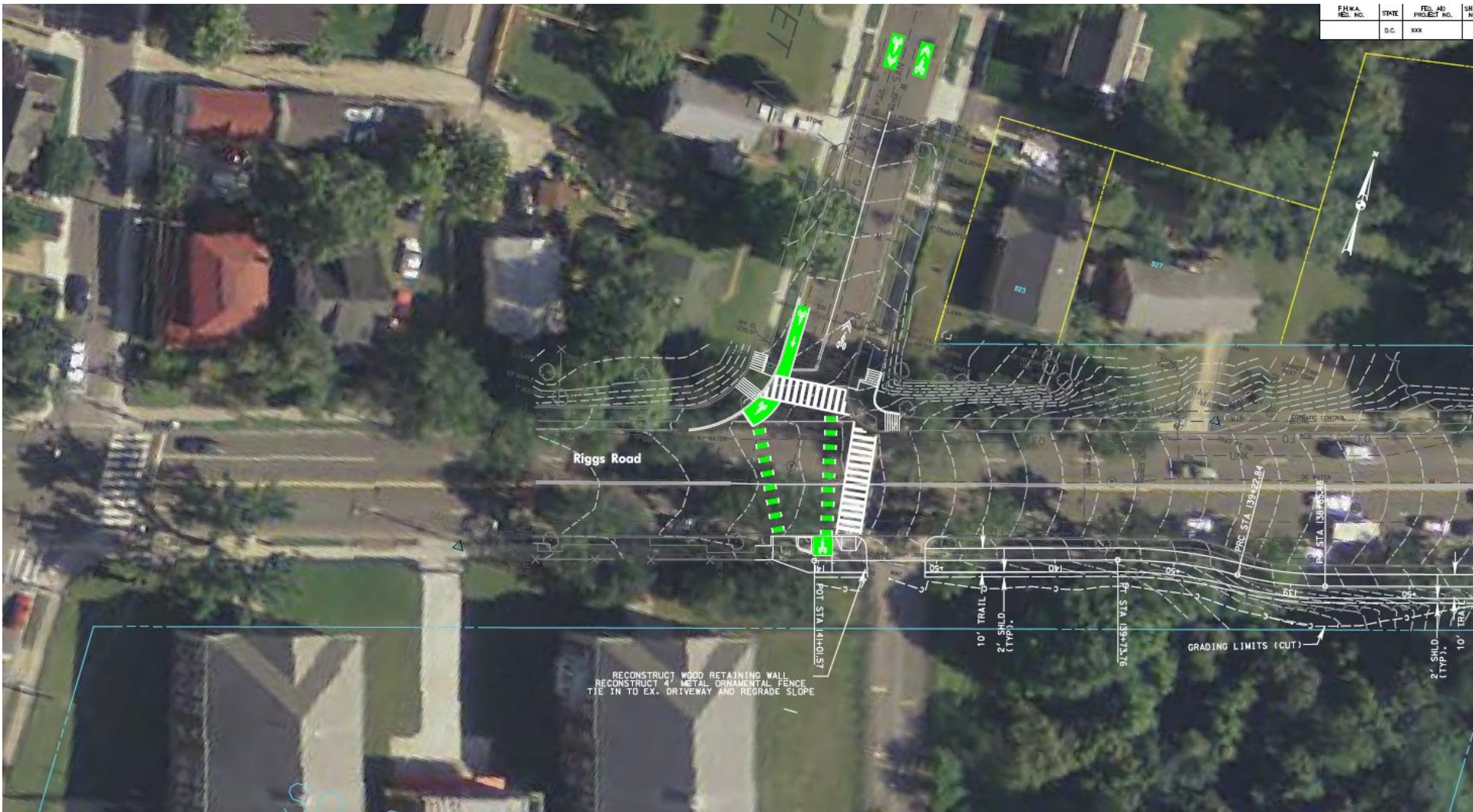


**LEGEND**

- HOMES
- MEMORIAL PARK SERVICE GARDEN
- CHURCH
- BIKE LANE
- SHARED USE PATH
- NATIONAL PARK SERVICE GARDEN
- EXISTING CONNECTING PATH
- FOCUS AREA
- SHARED USE STREET
- PARKING TO BE REMOVED
- SIDEWALKS

**d.**  
 DISTRICT PLANNING DEPARTMENT

**B**



Riggs Rd and First St (New Signal)



New Hampshire/McDonald Place/South Dakota

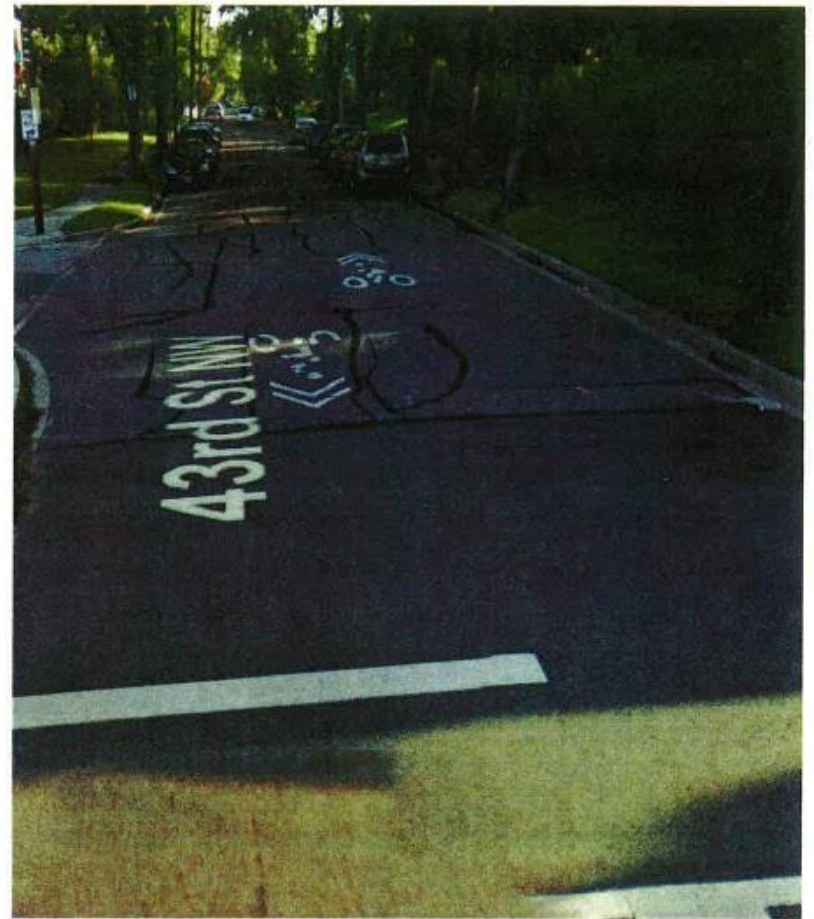
# Contraflow Bike Lanes Proposed for McDonald Place





Shared Lane Markings (aka Sharrows)

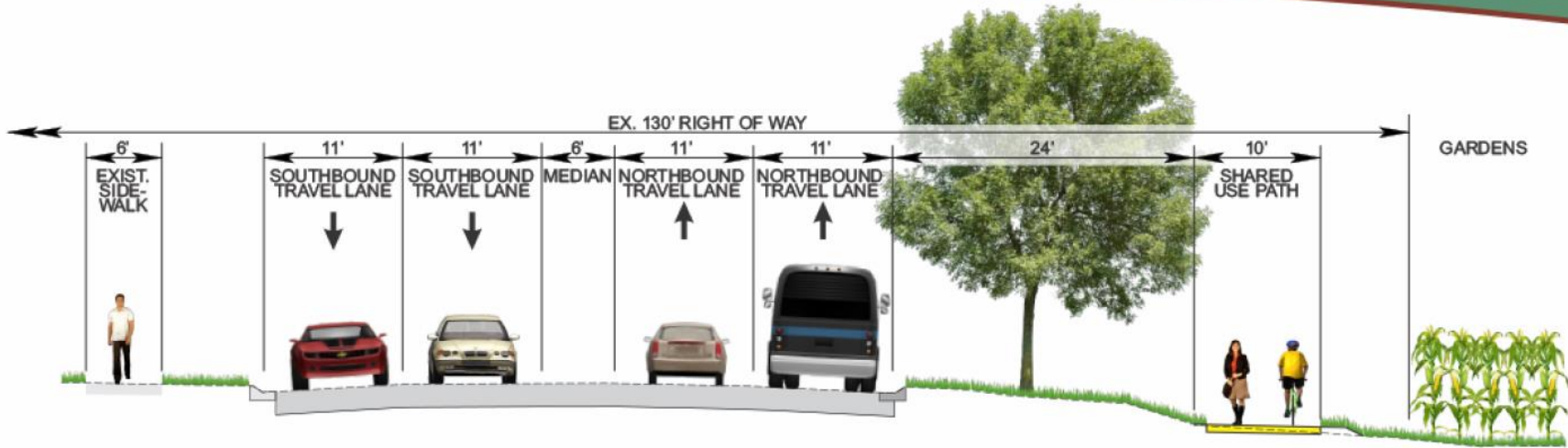
Proposed for 1<sup>st</sup> Street



Metropolitan Branch Trail



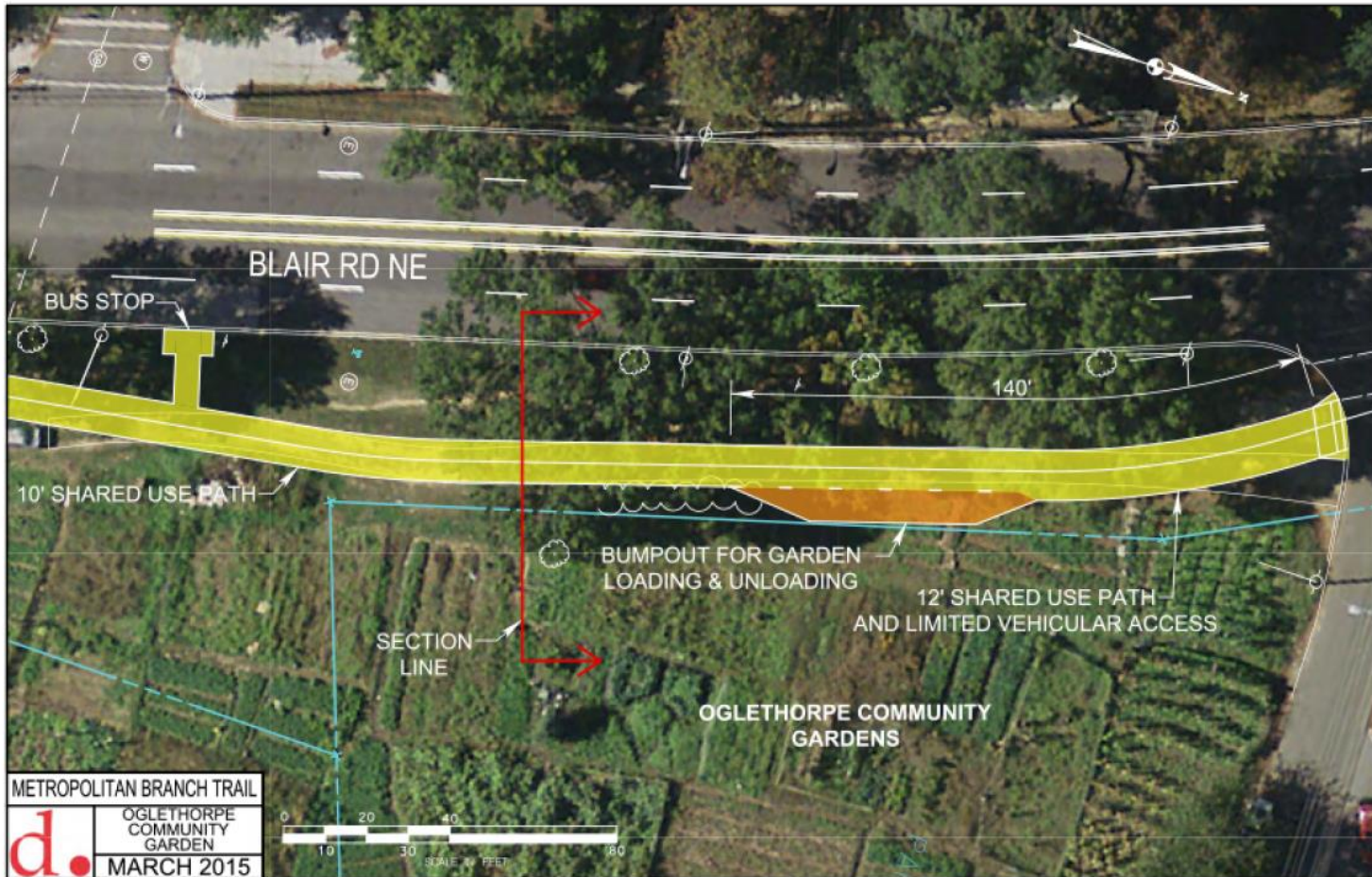
# Oglethorpe Community Garden

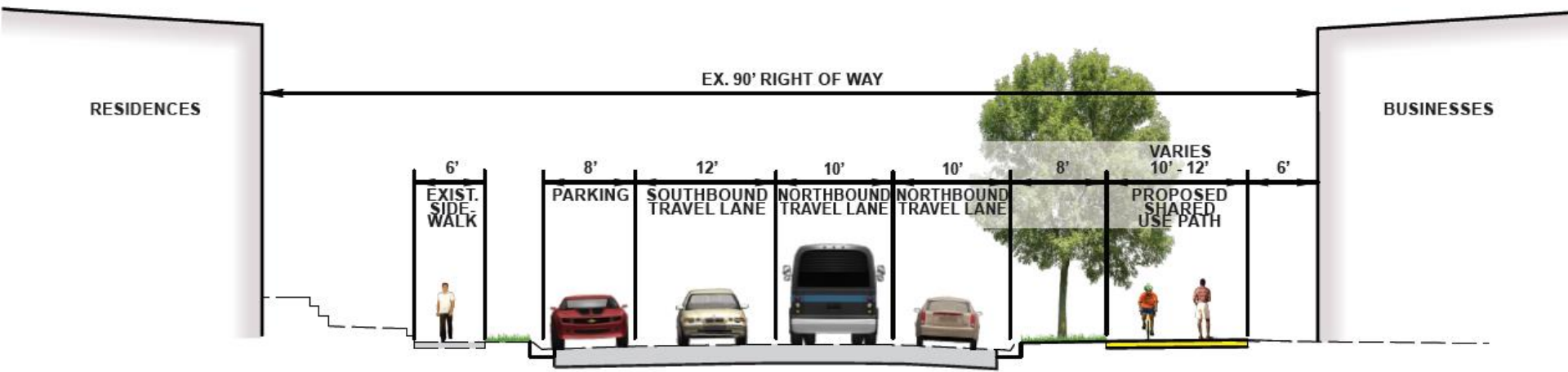


EXISTING CONDITIONS



PROPOSED IMPROVEMENTS





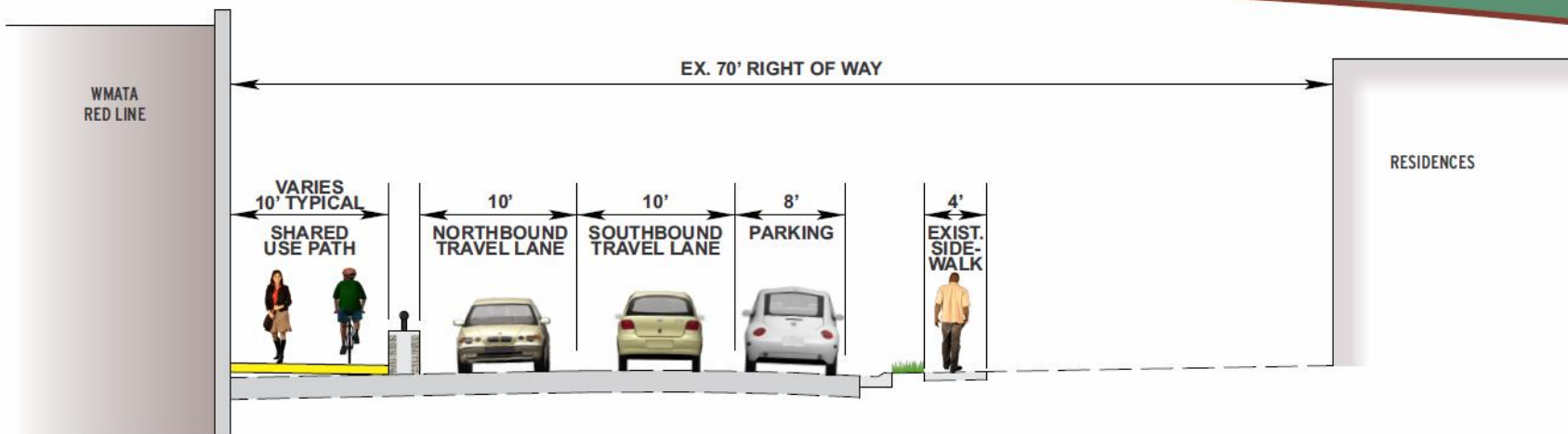
EXISTING CONDITIONS



PROPOSED IMPROVEMENTS



# Van Buren to Aspen



EXISTING CONDITIONS



PROPOSED IMPROVEMENTS



Metropolitan Branch Trail  
**Van Buren to Aspen**

